

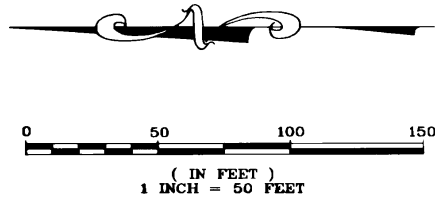
1990502428

Latitude 49, Phase 3

SPECIFIC BINDING SITE PLAN NO. 4

SITUATE IN A PORTION OF THE NORTHWEST QUARTER OF SECTION 30, TOWNSHIP 40 NORTH, RANGE 1 EAST OF W.M.

GENERAL BINDING SITE PLAN NO. 8-90
SPECIFIC BINDING SITE PLAN NO. 4



NORTH 1/4 CORNER SECTION 30-40-1

- LEGEND**
- SET 2" ALUM. CAP SURFACE MONUMENT STAMPED P.L.S. NO. 24218
 - SET #4 REBAR W/PLASTIC CAP STAMPED P.L.S. 24218 OR SET A SAWCUT AT TOP BACK OF CURB OF FRONT LOT CORNERS
 - BRASS CAP IN CONCRETE FOUND
 - - - DIVISION LINE

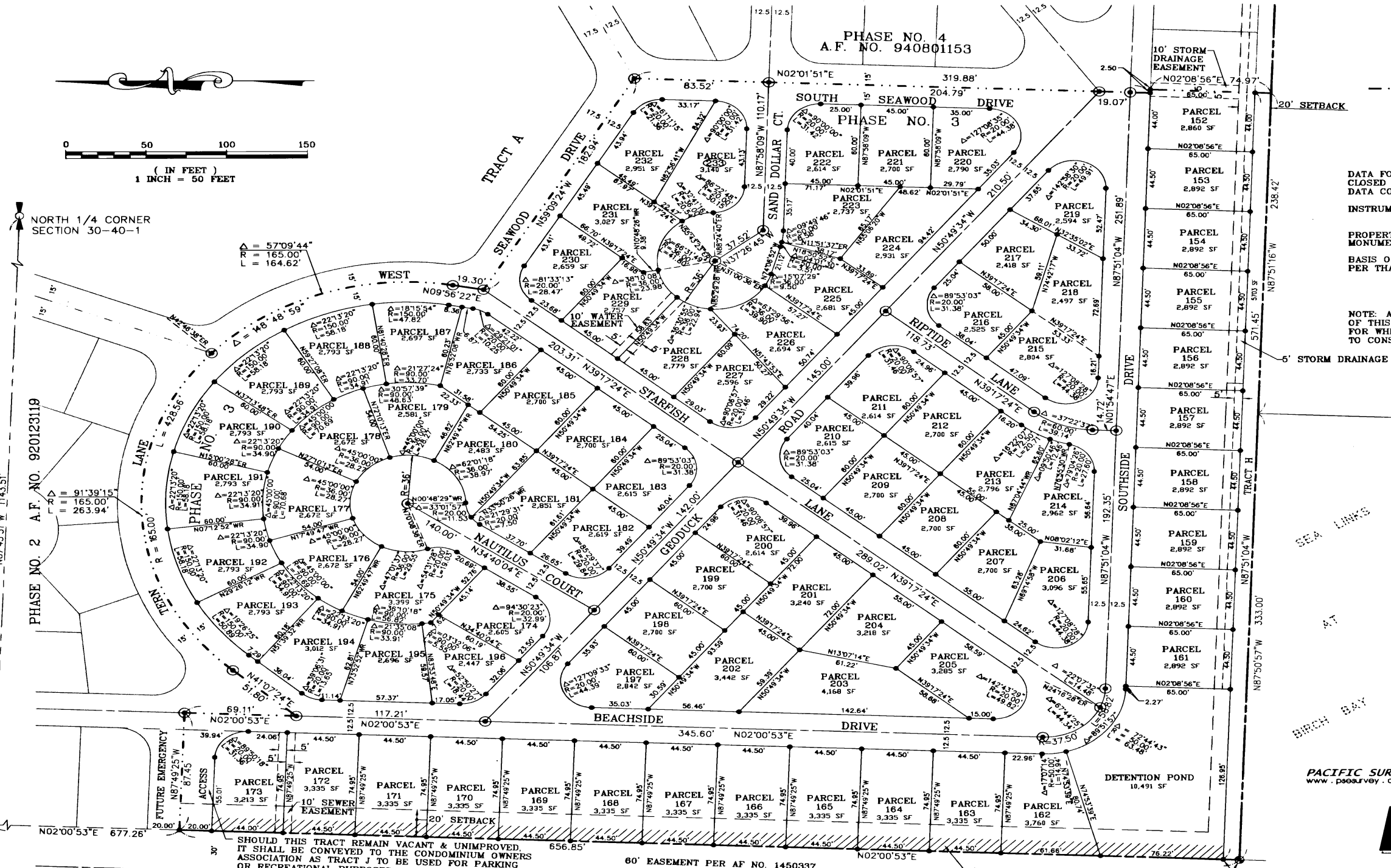
DATA FOR THIS SURVEY WAS GATHERED BY CLOSED TRAVERSE UTILIZING ELECTRONIC DATA COLLECTION.

INSTRUMENT USED: THEOMAT T1600
D.I. 2000 EDM ±3 ppm

PROPERTY CORNERS SET ON OR ABOUT 2-97. MONUMENTS SET ON OR ABOUT 12-98

BASIS OF BEARINGS: SOUTH LINE OF PHASE 4 PER THAT RECORD OF SURVEY A.F.#91025104.

NOTE: ALL ROADS LYING WITHIN THE BOUNDARIES OF THIS BINDING SITE PLAN ARE PRIVATE ROADWAYS FOR WHICH WHATCOM COUNTY HAS NO RESPONSIBILITY TO CONSTRUCT NOR MAINTAIN.



PACIFIC SURVEY AND ENGINEERING INC.
www.psesurvey.com pse@psurvey.com



1812 CORNWALL AVE.
BELLINGHAM, WASHINGTON 98225
PHONE 671-7387 FAX LINE 671-4685
JOB NO. 89047
DWG. NO. 89047BS5
1/29/99
SHEET 2 OF 2
DRAWN BY: JEW, ASM